

Standing-type Inclinometer

KB-AB/KB-AC

Inclination measurement as a deformation control instrument for nearby structures



The KB-AB and KB-AC are low-capacity inclinometers. They are used to monitor the conditions of inclination of neighboring structures built by urban civil engineering works.

Equipped with one-touch type stopper to prevent overloading during transportation and installation. The KB-AB measures inclination in one direction, while the KB-AC measures inclination in both X and Y directions.

Protective covers, wall mount brackets, and flat surface mount brackets are available according to usage conditions.

Built-in arresters are also available.

Temperature measuring function with a built-in thermocouple is also available.

Protection ratings : IP 67 equivalent

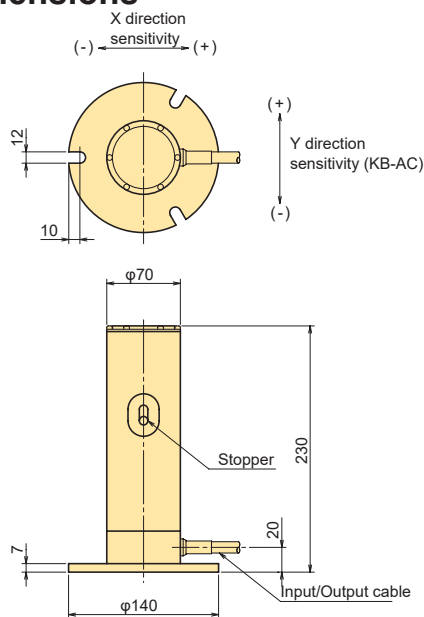
- **Made of all stainless steel with excellent corrosion resistance**
- **Easy carriage and installation with external stopper**
- **Two (X and Y) directional measurement with KB-AC**
- **Excellent stability**

■ Specification

TYPE	KB-1AB	KB-2AB	KB-5AB	KB-1AC	KB-2AC	KB-5AC
No. of measuring direction	1			2		
Capacity	±1°	±2°	±5°	±1°	±2°	±5°
Rated output	1mV/V (2000x10 ⁻⁶ strain)					
Non-linearity	0.5%RO					
Cross sensitivity	-			3%RO		
Allowable temperature range	-20 to +60℃					
Input/Output resistance	350Ω					
Recommended exciting voltage	2V or less					
Allowable exciting voltage	5V					
Input/Output cable	φ9mm 0.5mm ² 4-core shielded chloroprene cable 2m			φ9mm 0.3mm ² 8-core shielded vinyl cable 2m		
Weight	5kg					

In addition to the above, we can also manufacture custom-made products.

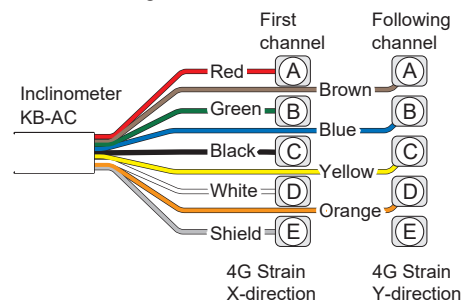
External Dimensions



Unit : mm

Connection to data logger

X and Y directions Inclinator KB-AC with 8-core integral cable

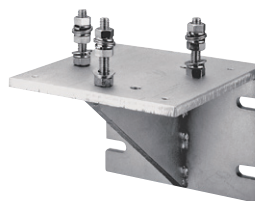
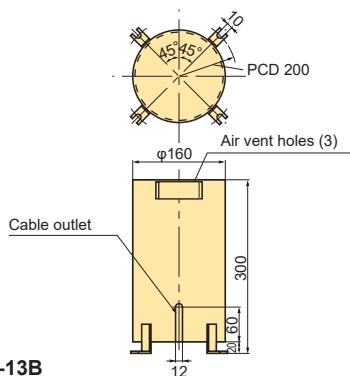


Related products



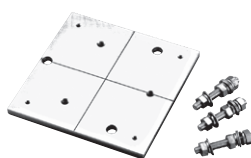
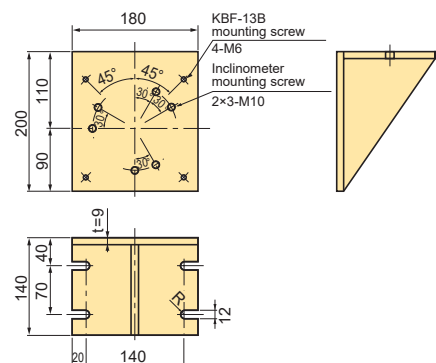
Protective cover KBF-13B

This cover protects the KB-AB/KB-AC inclinometer installed to structure from mechanical damage.



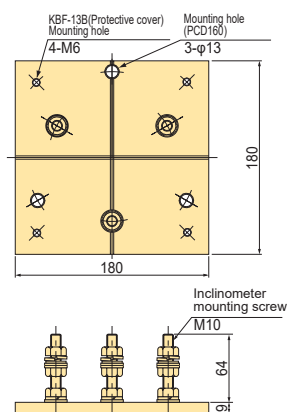
Wall mount fitting KBF-14C

This fitting is used to mount the KB-AB/KB-AC inclinometer to flat surface.



Flat mounting fitting KBF-15B

This fitting is used to mount the KB-AB/KB-AC inclinometer to wall of structure.



Level KBF-16

This level is standardly supplied to the KB-AB/KB-AC inclinometer



Approval Certificate **ISO9001**
Design and manufacture of
strain gauges, strain measuring
equipment and transducers

The contents of this catalog are subject to change without prior notice.
The contents of this catalog are as of January 2025. TML Pam E0733A.



8-2, Minami-ohi 6-chome, Shinagawa-ku, Tokyo 140-8560, JAPAN
TEL: +81-3-3763-5614 FAX: +81-3-3763-6128

