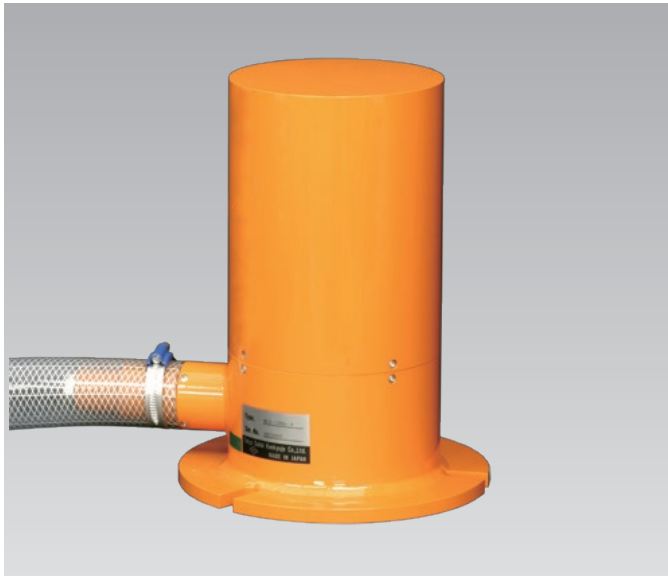


Ground level settlement

KLA-A/NKLA-B Settlement Transducer

Civil engineering design

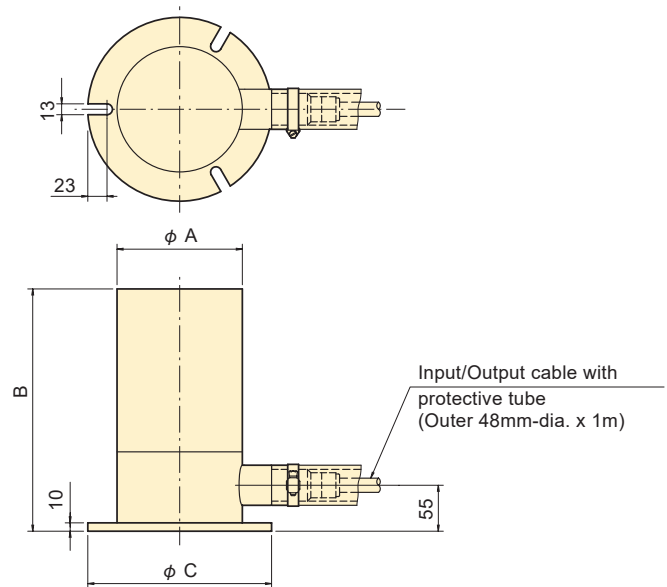


The KLA-A Settlement Transducers is set on a ground surface to measure the settlement of each ground layer. The NKLA-A is also for the same measurement while it can be used with the network measurement system TML-NET. Special anchors are mounted at specified positions inside a borehole and the amount of positional displacement between each anchor and the ground surface level is measured. Anchors can be mounted at the maximum of six levels inside one borehole..

Protection ratings : IP 45 equivalent

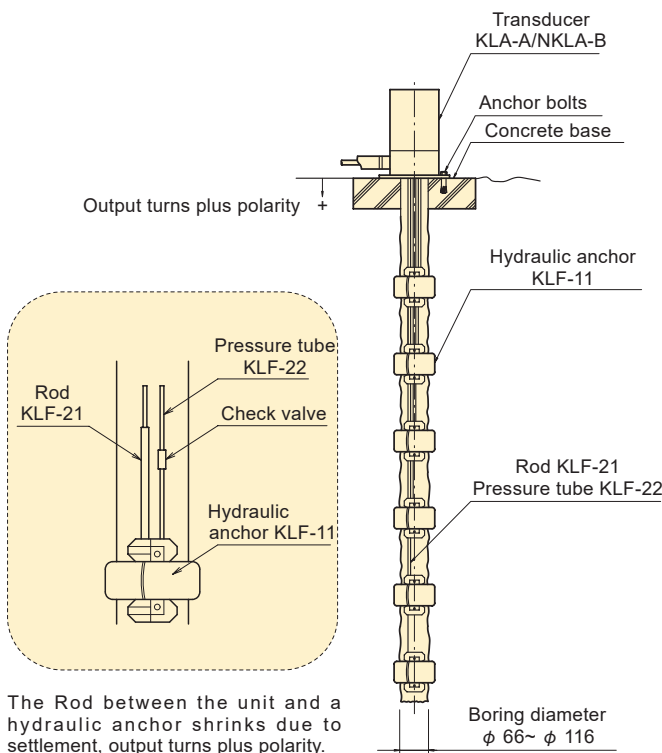
Remote measurement

Measures the amount of settlement of ground layers at the maximum 6 positions.



TYPE	ϕ A	B	ϕ C	D
KLA-100A/NKLA-100B	150	290	220	23
KLA-200A/NKLA-200B	200	360	260	15

PRINCIPLE AND APPLICATION



The Rod between the unit and a hydraulic anchor shrinks due to settlement, output turns plus polarity.

KLA-A SPECIFICATIONS

TYPE	KLA-100A-X	KLA-200A-X
Measuring point	1~6 points (-X filled with the specified points)	
Capacity	100mm	200mm
Rated Output	Approx. 2.5mV/V (5000×10 ⁻⁶ strain)	
Non-linearity	1%RO	
Allowable temperature range	-20 ~ +60°C (No icing)	
Input/Output resistance	350Ω	
Recommended exciting voltage	2V or less	
Allowable exciting voltage	5V	
Weight	5 kg	4.5~6 kg

Input/Output cable

for 1~3 points: ϕ 11.5mm 0.3mm² 12-core shielded vinyl cable 2m
for 4~6 points: ϕ 16.5mm 0.3mm² 24-core shielded vinyl cable 2m

NKLA-B SPECIFICATIONS

TYPE	NKLA-100B-X	NKLA-200B-X
Measuring point	1~6 points (-X filled with the specified points)	
Capacity	100mm	200mm
Rated indication	Approx. 5000 digits	
Non-linearity	1%RO	
Allowable temperature range	-20 ~ +60°C (No icing)	
Channel set	Factory default (000~ 999)	
Weight	5 kg	5~7 kg

Supplied cable

CT6-2R2/WP-STB ϕ 6mm 0.5mm² 2-core shielded vinyl cable 2m

To activate electrical insulation function it requires the dedicated instrument as below.

TDS-540-03 and NDR-100, or TDS-150-06 including an option for Switching box/TML-NET driving board