

Waterproof load cell

WTCLP-NA

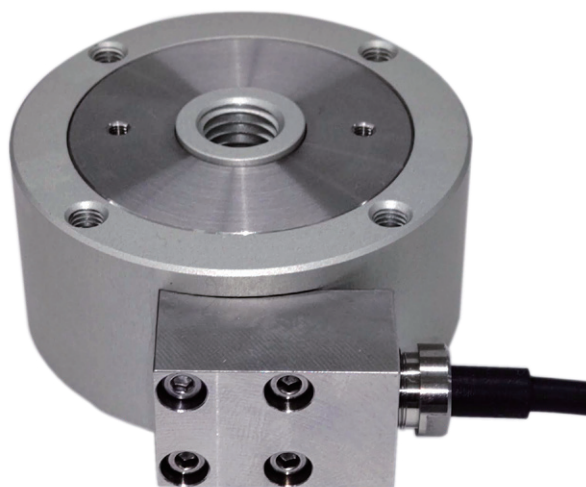
Specifically engineered for geotechnical testing applications under hydraulic conditions, such as triaxial compression tests.

This low-capacity, waterproof load cell is optimized for integration into soil testing systems and offers reliable performance under water pressures up to 1.5 MPa.

Protection ratings : IP 68 equivalent

Features

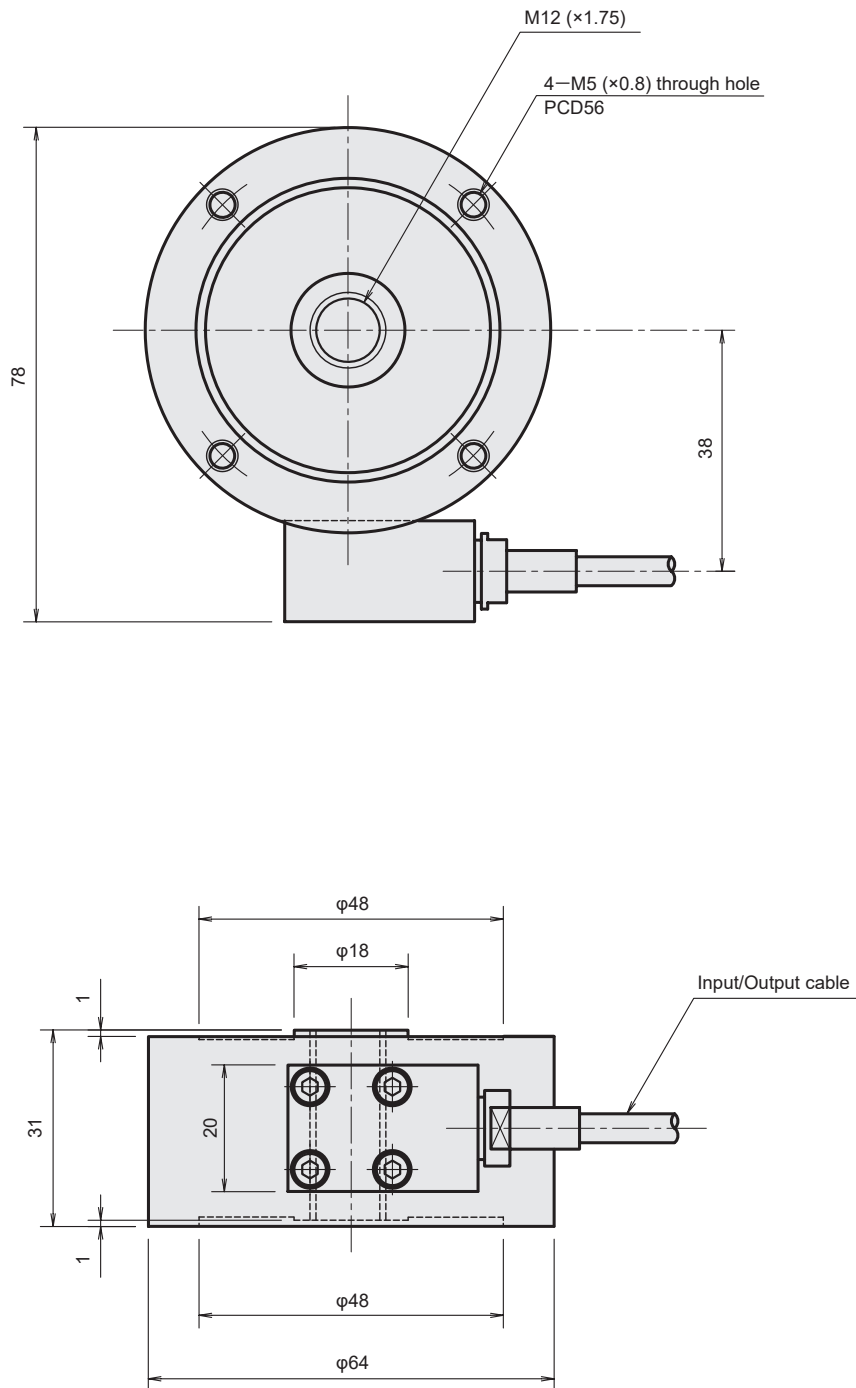
- Outer diameter: $\phi 64$ mm; height: 31 mm
- Rated output: approx. 2mV/V
- Designed to be unaffected by pressure fluctuations
- Pressure resistance: up to 1.5MPa (waterproof)
- Optional relay fitting available



Specifications

| Type | WTCLP-500NA | WTCLP-1KNA | WTCLP-2KNA | WTCLP-5KNA | WTCLP-10KNA |
|-------------------------------|--|------------|------------|------------|-------------|
| Capacity | 500N | 1kN | 2kN | 5kN | 10kN |
| Rated output | Approx. 2mV/V Approx. 4000×10^{-6} strain) | | | | |
| Non-linearity | 0.5%RO | | | | |
| Hysteresis | 0.5%RO | | | | |
| Temperature effect on zero | 0.05%RO/°C | | | | |
| Temperature effect on span | 0.01%/°C | | | | |
| Compensated temperature range | 0 to +40°C | | | | |
| Allowable temperature range | 0 to +60°C | | | | |
| Over load | 120% | | | | |
| Input/Output resistance | 175 Ω | | | | |
| Recommended exciting voltage | 2V or less | | | | |
| Allowable exciting voltage | 10V | | | | |
| Zero balance | 5000×10^{-6} or less | | | | |
| Pressure resistance | 1.5MPa | | | | |
| Input/Output cable | $\phi 4.6$ mm 0.14mm ² 4-conductor shielded vinyl cable 2m free end | | | | |

External dimensions



Unit : mm



Approval Certificate **ISO9001**
Design and manufacture of
strain gauges, strain measuring
equipment and transducers

Visual LOG is a registered trade mark of Tokyo Measuring Instruments Laboratory Co., Ltd.

The contents of this catalog are subject to change without prior notice.

The contents of this catalog are as of May 2025. TML Pam E2047A.



8-2, Minami-ohi 6-chome, Shinagawa-ku, Tokyo 140-8560, JAPAN
TEL: +81-3-3763-5614 FAX: +81-3-3763-6128

