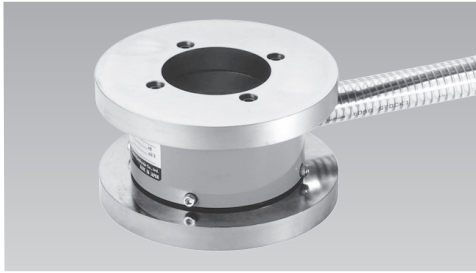


Anchoring strand tension measurement

KCC-NA Center-hole type Compression Load Cell

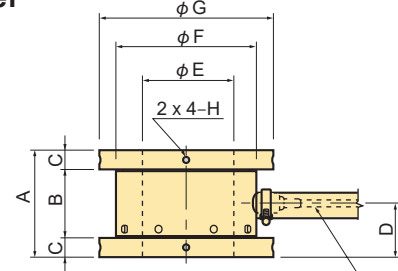
Civil engineering design

Made-to-order

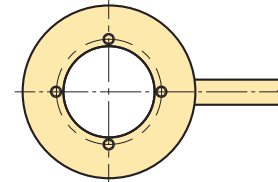


Large center-hole diameter
Flange-mounted

The KCC-NA is a center-hole-type load cell with flanges. The large diameter of its center hole makes this load cell suitable for use in almost all anchoring methods. It can deliver stable measurement performance under a relatively high eccentric load. Protection ratings: IP67 equivalent



Input/Output cable
Protective tube (Outer: ϕ 33mm) 0.3m



SPECIFICATIONS

| TYPE | KCC-200KNA | KCC-500KNA | KCC-1MNA |
|-------------------------------|--|------------|----------|
| Capacity | 200kN | 500kN | 1MN |
| Rated Output | 1mV/V (2000×10^{-6} strain) $\pm 10\%$ | | |
| Non-linearity | 1%RO | | |
| Hysteresis | 1%RO | | |
| Temperature effect on zero | 0.1%RO/ $^{\circ}$ C | | |
| Temperature effect on span | 0.05%/ $^{\circ}$ C | | |
| Compensated temperature range | -10 ~ +60 $^{\circ}$ C | | |
| Allowable temperature range | -20 ~ +70 $^{\circ}$ C | | |
| Over load | 120% | | |
| Input/Output resistance | 350 Ω \pm 1% | | |
| Recommended exciting voltage | 10V or less | | |
| Allowable exciting voltage | 20V | | |
| Zero balance | 5%RO | | |
| Weight | 13kg | 20kg | 32kg |

Input/Output cable : ϕ 9mm 0.5mm² 4-core shielded chloroprene cable 5m

DIMENSIONS

| TYPE | A | B | C | D | ϕ E | ϕ F | ϕ G | H |
|------------|-----|-----|----|----|----------|----------|----------|----------|
| KCC-200KNA | 108 | 68 | 20 | 54 | 90 | 145 | 190 | - |
| KCC-500KNA | 140 | 90 | 25 | 70 | 120 | 185 | 230 | M 8 DP20 |
| KCC-1MNA | 183 | 123 | 30 | 92 | 140 | 220 | 250 | M12 DP20 |

KCG-200KNA Center-hole type Compression Load Cell

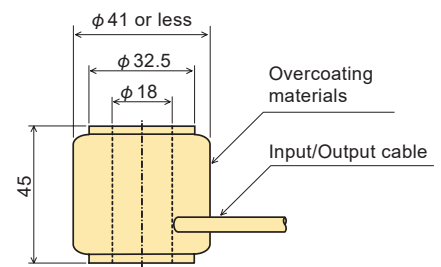
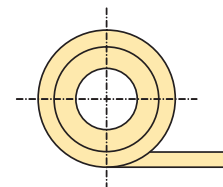
Civil engineering design



Small size
Light weight
Low price

Protection ratings: IP67 equivalent

Small and inexpensive center-hole load cell enabling installation at the strand anchoring part in bridges, etc.



SPECIFICATIONS

| TYPE | KCG-200KNA |
|-------------------------------|---|
| Capacity | 200kN |
| Rated Output | 2.25mV/V (4500×10^{-6} strain) $\pm 10\%$ |
| Non-linearity | 0.5%RO |
| Hysteresis | 0.5%RO |
| Temperature effect on zero | 0.1%RO/ $^{\circ}$ C |
| Temperature effect on span | 0.05%/ $^{\circ}$ C |
| Compensated temperature range | -10 ~ +60 $^{\circ}$ C |
| Allowable temperature range | -30 ~ +70 $^{\circ}$ C |
| Over load | 120% |
| Ultimate overload rating | 200% |
| Input/Output resistance | 350 Ω |
| Recommended exciting voltage | 10V or less |
| Allowable exciting voltage | 20V |
| Zero balance | 5%RO |
| Weight | 250g |

Input/Output cable : ϕ 3mm 0.05mm² 4-core shielded chloroprene cable 2m

